

**Rezervni dijelovi - pribor: (Slika 6, stranica 51):**

<b>Poz. br.</b>	<b>Naziv dijela</b>	<b>Oznaka odljevka</b>
121	POSTOLJE	VE-21
103	PREDNJICA	VE-03
104	MASKA GORNJA	VE-04
105	VRATA	VE-05
106	REGULATOR	VE-06
110	KOŠ	VE-10
111	POKLOPAC KOŠA	VE-11
112	STRANICA LOŽIŠTA DONJA	VE-12
112 Z	STRANICA LOŽIŠTA ZAČELJA	VE-12Z
113	STRANICA LOŽIŠTA GORNJA SA DIMNIM NASTAVKOM	VE-13
114	STRANICA LOŽIŠTA GORNJA BEZ DIMNOG NASTAVKA	VE-14
116	DIMNI NASTAVAK	TE-19
118	POKLOPAC DIMNOG NASTAVKA	VE-18
119	GORNJA PLOČA	VE-19
120	ŠTITNIK STAKLA	VE-20
201.1	PLAŠT	
202.1	DNO	
205	PEPELJARA	
208	POKLOPAC REGULATORA	
234	PLOČA	
213	ŠTITNIK GORNJE PLOČE	
216	DRŽAČ STAKLA	
217	LIM SEKUNDARNOG ZRAKA	
218	VODILICA PEPELJARE	
301	STAKLO	
01-000	RUČKA VRATA LOŽIŠTA	
10-000	OPRUGA VRATA - sklop	
	PRIBOR:	
801	ŽARAČ	
802	GREBILICA	
806	ZAŠTITNA RUKAVICA S LOGOM PLAMEN-crvena	

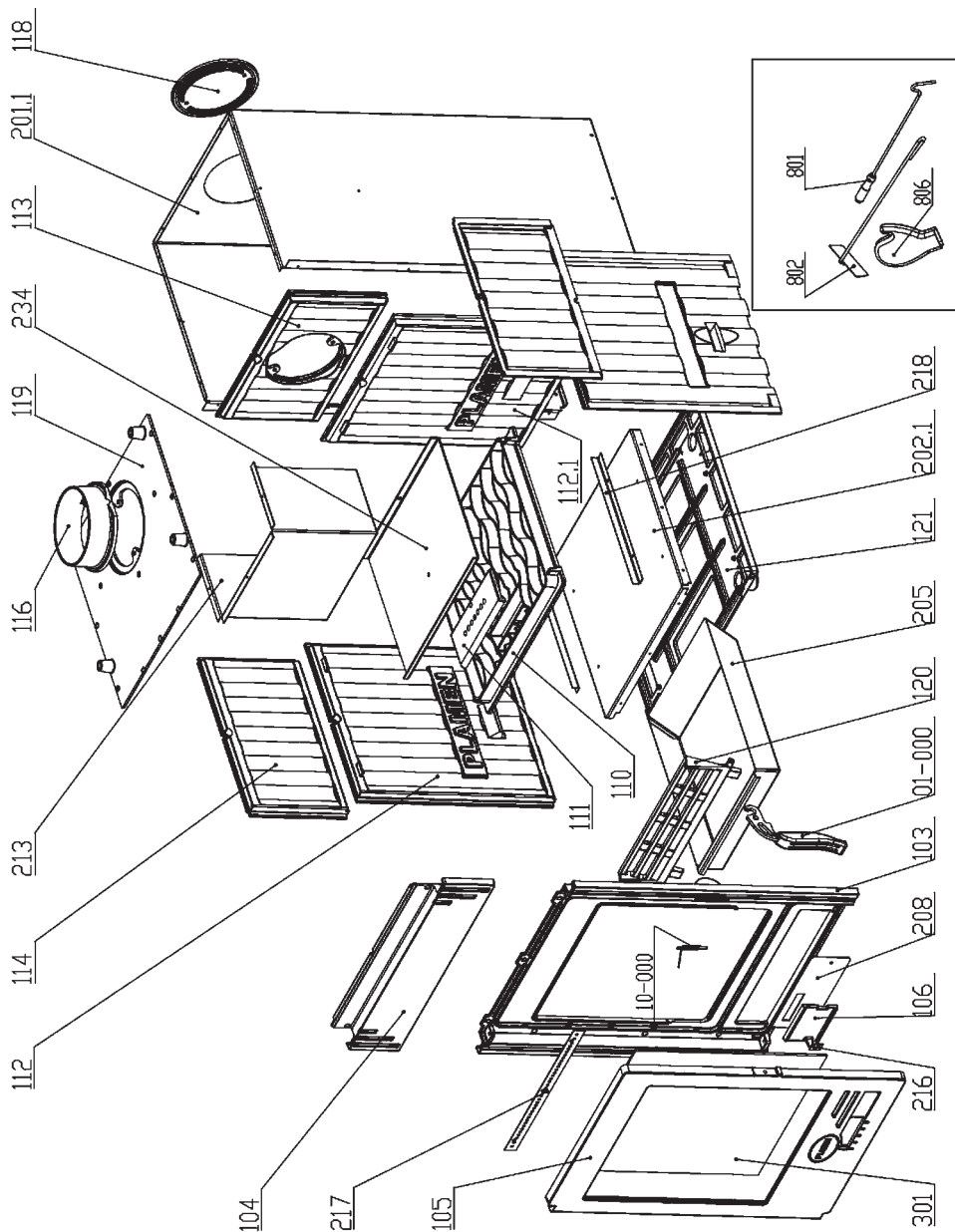
**ZADRŽAVAMO PRAVO NA PROMJENE KOJE NE UTJEČU NA  
FUNKCIONALNOST I SIGURNOST APARATA.**

**Spare parts and accessories (Figure 6, page 51):**

Item No.	Description	Part No.
121	BASEPLATE	VE-21
103	FRONT FRAME	VE-03
104	UPPER TRIM	VE-04
105	DOOR	VE-05
106	AIR SUPPLY CONTROL	VE-06
110	FIREBOX PAN	VE-10
111	FIREBOX PAN COVER	VE-11
112	FIREBOX WALL, LOWER	VE-12
112 Z	FIREBOX WALL REAR	VE-12Z
113	FIREBOX WALL, UPPER, WITH FLUE CONNECTION OUTLET	VE-13
114	FIREBOX WALL, UPPER, WITHOUT FLUE CONNECTION OUTLET	VE-14
116	FLUE CONNECTION OUTLET	TE-19
118	FLUE CONNECTION OUTLET LID	VE-18
119	TOP PLATE	VE-19
120	GLASS SHIELD	VE-20
201.1	SHELL	
202.1	BOTTOM	
205	ASH TRAY	
208	AIR SUPPLY CONTROL COVER	
234	PLATE	
213	TOP PLATE SHIELD	
216	GLASS HOLDER	
217	SECONDARY AIR CONTROL PLATE	
218	ASH TRAY GUIDE	
301	GLASS	
01-000	FIREBOX DOOR HANDLE	
10-000	DOOR SPRING – set	
	ACCESSORIES:	
801	GRIP	
802	SCRAPER SET	
806	PROTECTIVE GLOVE LOGO PLAMEN - red	

**WE RESERVE THE RIGHT TO MAKE MODIFICATIONS NOT AFFECTING THE FUNCTIONALITY AND SAFETY OF THE APPLIANCE!**

Rezervni dijelovi - pribor; Ersatzteile - Zubehör; Spare parts & accessories;  
 Rezervní díly – příbor; Rezervni deli - pribor; Резервни делови - прибор:



Slika 6; Abbildung 6; figure 6; obrázek 6; slika 6; слика 6:

21.09.2012.